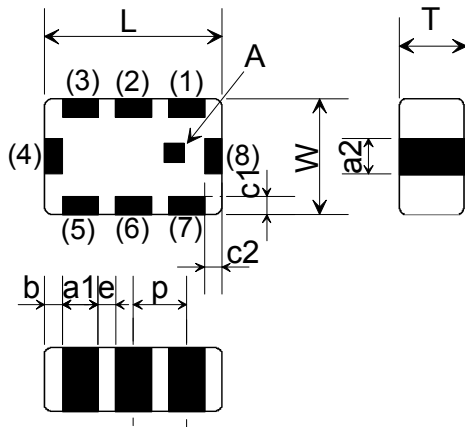


## Balance Matching BAND PASS FILTER (Preliminary)

### 1. Characteristics (at -40 ~ +85 °C)

Part Number	LFB212G45CF7D291
Unbalance Port Impedance (Nominal)	50 Ω
Frequency Range (BW)	2450.00 ± 50.00 MHz
Insertion Loss in BW	2.20 dB max. at 25 °C 2.50 dB max. at - 40 ~ + 85 °C
Attenuation (Absolute value)	21.5 dB min. at 880.00 ~ 960.00 MHz 19.0 dB min. at 1710.00 ~ 1990.00 MHz 7.5 dB min. at 2170.00 MHz 11.5 dB min. at 4800.00 ~ 5000.00 MHz 19.0 dB min. at 7200.00 ~ 7500.00 MHz
Ripple	1.50 dB max.
V.S.W.R. in BW	1.95 max.
Power Capacity	500 mW max.

### 2. Construction, Dimensions & Marking



Mark	Meaning
A	Directional Input Mark

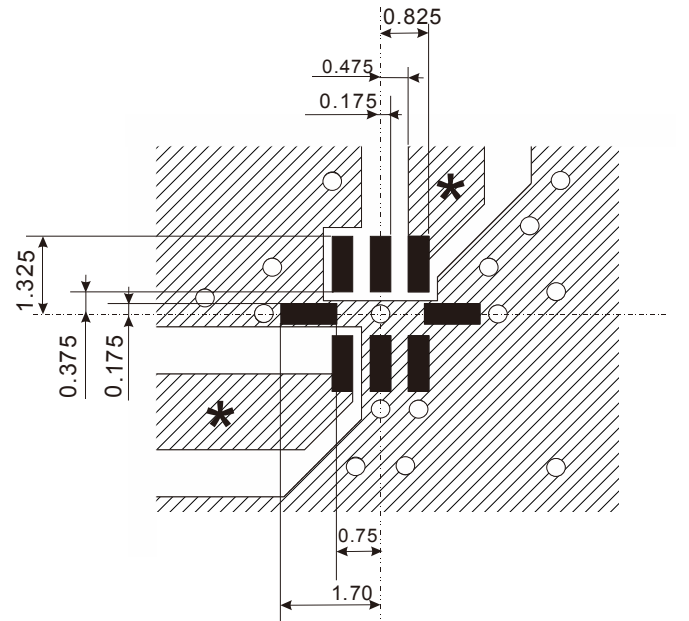
(in mm)

Mark	Dimension	Mark	Dimension	Mark	Dimension
L	2.00±0.15	a2	0.30±0.15	e	0.35±0.10
W	1.25±0.15	b	0.20±0.15	p	0.65±0.05
T	0.70 max.	c1	0.30±0.20	-	-
a1	0.30±0.15	c2	0.30±0.20	-	-

#### TERMINAL CONFIGURATION

Terminal No.	Terminal Name	Terminal No.	Terminal Name
(1)	ANT I/O	(5)	BT I/O
(2)	NC	(6)	GND
(3)	NC	(7)	NC
(4)	GND	(8)	GND

### 3. Land Pattern



(in : mm)

- Land
- Solder resist
- No pattern Solder resist
- Through Hole Φ0.30

※Line width to be designed to match 50 Ω characteristic impedance, depending on PCB material and thickness